

**Solutions for Large Diameter Piping
Fully Code Compliant Weld Scanners**

ATC

Auto Tracking Crawler

SELF TRACKING ID, OD,
TANK OR VESSEL
AUTOMATED ULTRASONIC
TESTING SCANNER



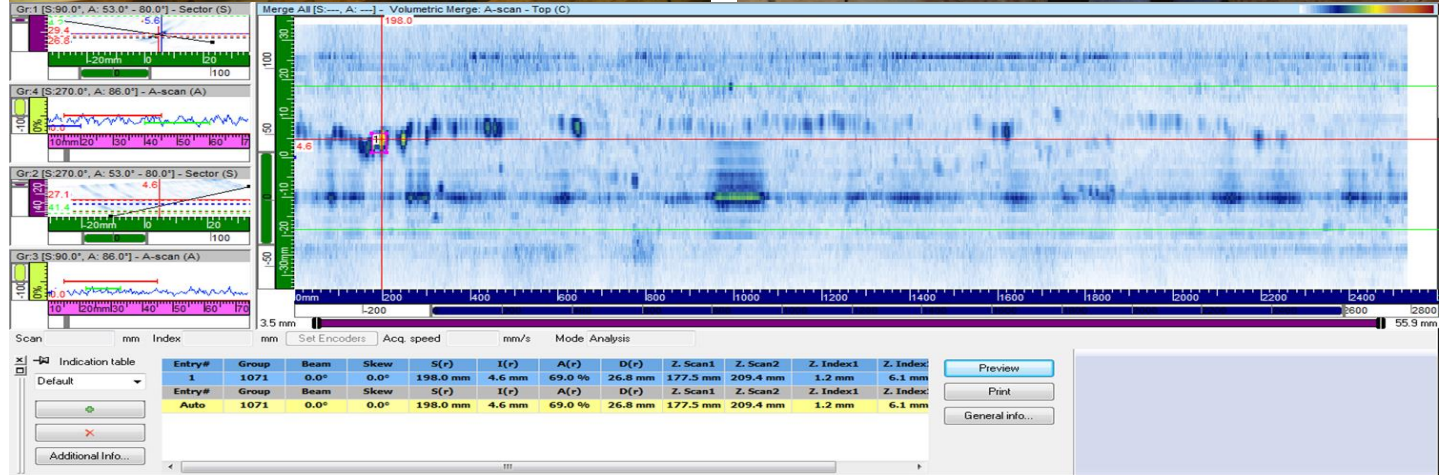
Call 604-420-4433 for more information or email info@nde.net



www.nde.net

Our ATC scanners were developed for large diameter piping, where underground access or deep ditch placement, or sheer size provided limited abilities for Radiography. Magnetic drive and steering wheels with suspension allow it to navigate mitres, hi-lo conditions and can carry itself completely inverted. Our scanners run various phased array, creep wave and TOFD channels to ensure full weld coverage. Each weld design and fit-up matrices are modeled beforehand. Technicians have a database of pre-established parameters to ensure each weld scan is true to the field conditions and calibration files and verifications are correct.

Data is displayed in a color format showing internal defects and technicians can measure, depth, height, length and evaluate defects to various code criteria for accept or reject status. Defects can then be easily marked on the weld with length and depth for welders to repair. Logs are kept for easy return to a defect location after repair and rescans can verify the repair status.



Call 604-420-4433 for more information or email info@nde.net